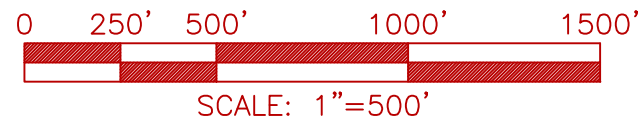


SURVEY OF THE COASTAL ACQUISITION TRAIL FORT BRAGG, CALIFORNIA

SECTIONS 1, 12 & 13, T. 18 N., R. 18 W. & SECTIONS 18, T. 18 N., R. 17 W., M.D.M.
MENDOCINO COUNTY, CALIFORNIA
DECEMBER 2008



BASIS OF BEARINGS

THIS SURVEY IS BASED ON TIES FROM USC&GS STATION "SOLDIER" TO USC&GS STATION "FORT BRAGG", SAID BEARING IS N17°36'45"E PER THE RECORD OF SURVEY FILED IN MAP CASE 2, DRAWER 52, PAGE 17, M.C.R.

SURVEY PURPOSE

THE PURPOSE OF THIS SURVEY IS TO DELINEATE AND QUANTIFY THE FEE TRANSFER OF APPROXIMATELY 101 ACRES FROM GEORGIA PACIFIC, LLC TO THE CITY OF FORT BRAGG FOR A COASTAL HIKING TRAIL ALONG THE MENDOCINO HEADLANDS.

SURVEY NOTES

1) FOUND THE OBLITERATED REMAINS OF THE SECTION CORNER COMMON TO SECTIONS 12, 13, 7 AND 18, TOWNSHIP 18 NORTH, RANGES 17 AND 18 WEST. RESET CORNER BASED ON A LEAST SQUARES ADJUSTMENT USING REFERENCE MONUMENTS FROM R4. SEE DETAIL "A" THIS SHEET.

LEGEND

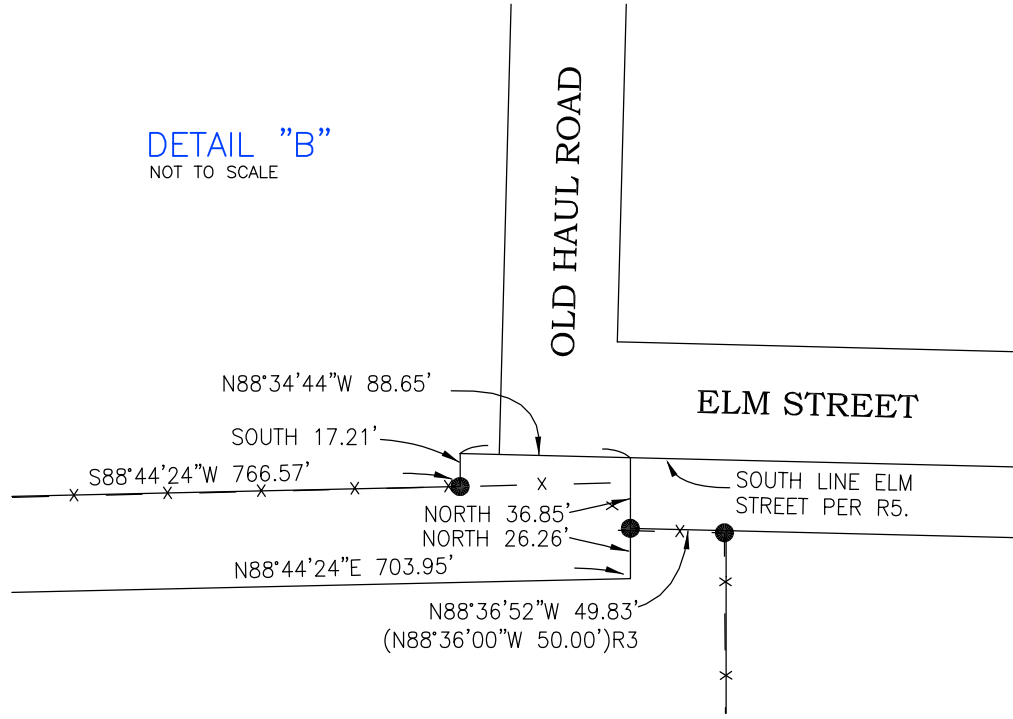
- INDICATES FOUND 3/4" REBAR WITH PLASTIC PLUG STAMPED "LS 5940" PER THE RECORD OF SURVEY FILED IN MAP CASE 2, DRAWER 52, PAGE 17, UNLESS NOTED OTHERWISE.
- INDICATES SET 5/8" REBAR, WITH ORANGE PLASTIC PLUG STAMPED "TAYLOR LS 7925".
- △ USC&GS HORIZONTAL CONTROL POINT
- () INDICATES RECORD DATA PER NOTED REFERENCE
- SNF SEARCHED FOR MONUMENT AT RECORD LOCATION, NOTHING FOUND.
- M.C.R. MENDOCINO COUNTY RECORDS

REFERENCES

- R1 MAP CASE 2, DRAWER 10, PAGE 5, M.C.R.
- R2 MAP CASE 2, DRAWER 43, PAGE 31, M.C.R.
- R3 MAP CASE 2, DRAWER 50, PAGE 20, M.C.R.
- R4 MAP CASE 2, DRAWER 52, PAGE 17, M.C.R.
- R5 MAP CASE 2, DRAWER 57, PAGE 38, M.C.R.
- D1 BOOK 834, PAGE 517, OFFICIAL RECORDS MENDOCINO COUNTY

DETAIL "B"

NOT TO SCALE



PARCEL AREAS

PARCEL	ACRES
NORTH PARK	1.71
NORTH TRAIL	19.85
NORTH CENTRAL PARK	4.24
FUTURE TRAIL	8.66
SOUTH TRAIL	37.61
SOUTH PARK	28.93

LINE TABLE

LINE	COURSE	LINE	COURSE
L1	N45°30'21"W 355.31'	L39	N34°05'57"E 23.74'
L2	N55°40'10"W 550.41'	L40	S55°34'23"E 306.74'
L3	S36°46'32"W 23.77'	L41	S55°32'31"E 228.06'
L4	N56°18'20"W 222.21'	L42	S58°21'55"E 18.94'
L5	N83°07'34"W 364.51'	L43	N54°54'54"E 55.87'
L6	N63°34'37"W 134.30'	L44	N39°29'52"W 59.11'
L7	N08°11'33"W 367.27'	L45	N30°48'08"W 376.77'
L8	S57°28'51"E 136.43'	L46	N40°00'31"E 199.91'
L9	S69°37'33"W 97.54'	L47	S62°12'00"W 80.44'
L10	S23°16'21"W 297.65'	L48	N52°20'55"W 375.76'
L11	S52°58'47"W 225.44'	L49	N19°54'21"W 180.60'
L12	N35°37'43"W 79.80'	L50	N35°57'36"W 122.48'
L13	N78°20'52"W 303.11'	L51	N77°35'43"W 216.17'
L14	S49°10'41"W 220.22'	L52	N25°50'30"E 237.83'
L15	S73°51'56"W 208.42'	L53	N60°12'07"E 171.20'
L16	N46°48'26"W 373.38'	L54	N01°41'41"E 138.77'
L17	N30°42'19"E 97.02'	L55	N66°34'16"E 135.61'
L18	N14°58'26"W 390.00'	L56	S06°18'36"W 396.65'
L19	N42°04'51"W 290.15'	L57	S16°05'55"E 260.06'
L20	N28°30'43"W 297.75'	L58	N05°39'07"W 226.24'
L21	N28°01'08"E 112.81'	L59	N23°12'44"W 81.96'
L22	S10°00'52"E 111.17'	L60	N02°48'57"W 187.86'
L23	N57°40'20"E 326.07'	L61	N48°25'05"E 324.88'
L24	S74°26'58"E 375.76'	L62	N17°52'53"E 215.88'
L25	N40°00'31"E 273.21'	L63	N14°52'56"E 33.74'
L26	S77°06'26"E 429.82'	L64	N01°23'08"E 116.51'
L27	N21°51'48"E 481.44'	L65	N04°51'44"E 174.38'
L28	N39°55'20"W 294.83'	L66	N54°41'20"W 106.15'
L29	S50°04'40"W 100.00'	L67	N01°26'50"W 228.64'
L30	S39°55'20"E 235.00'	L68	N01°26'50"W 140.00'
L31	S21°51'48"W 336.16'	L69	N31°07'35"E 120.65'
L32	N77°06'26"W 550.4'	L70	S88°44'24"W 325.±
L33	N83°42'08"E 201.81'	L71	N88°44'24"E 59.02'
L34	N31°36'00"E 100.08'	L72	S38°48'27"W 280.66'
L35	S58°23'39"E 334.03'	L73	S01°30'20"W 300.00'
L36	S01°30'20"W 300.00'	L74	S62°12'00"W 211.±
L37	S57°40'20"W 269.70'		
L38	S56°18'20"E 85.89'		

CURVE TABLE

CURVE	DATA
C1	(R=5949.72')M&R4 L=53.05' Δ=0°30'39"
C2	(R=189.21' L=386.60' Δ=117°04'10"
C3	(R=5949.72')M&R4 L=242.83' Δ=2°47'19"
C4	(R=5949.72')M&R4 (L=295.88')M&R4 (Δ=2°50'58')M&R4

